

Volta

Paradigm Remote Control



LEVEL CONTROL



**TOUCH
SENSITIVE**



433 MHz

AUTOMATE | Paradigm remotes feature a contemporary design with touch sensitive controls. Available in single and fifteen channel models, Paradigm remotes are compatible with all ARC motors.

FEATURES:

- Available in single channel & Fifteen Channel.
- Touch sensitive buttons.
- Levelling control (15 channel remote).
- LCD display (15 Channel remote).
- Hide unused channel function.
- Slim Magnetic wall mount.

CONTENTS

1	TECHNICAL DATA / PACK CONTENTS	3
2	SAFETY	4
3	INSTALLATION	5
3.1	Wall mount holder	5
3.2	Remote battery	5
4	FUNCTIONAL OVERVIEW	6
4.1	Buttons	6
4.2	Levelling control	6
4.3	Selecting a channel - (multi channel remote) 4.4	7
	Group control using CH "0"	7
5	PROGRAMMING	8
5.1	Protocol selection 5.2	8
	Hide unused channels	9
6	ADDING OR REMOVING CONTROLLERS & CREATING GROUP CHANNELS	10
6.1	Using Motor P1 Button	10
6.2	Using a pre-existing Controller	10
7	TROUBLESHOOTING	11

1 TECHNICAL DATA / PACK CONTENTS

TECHNICAL SPECIFICATIONS	
Voltage:	3V (CR2450)
Frequency:	433.92 MHz
Transmitting Power:	10 milliwatt
Ambient Operating Temperature:	-10°C -50°C
Transmission Distance:	up to 200 meters (open space)

PACK CONTENTS

1 x remote (Single or Fifteen Channel)

1 x magnetic holder inc. wall fixing screws 1 x

Instruction manual

1 x 3V - CR2450 battery

WARNING: Important safety instructions to be read before installation and use.

Incorrect installation or use can lead to serious injury and will void manufacturer's liability and warranty.

It is important for the safety of persons to follow the enclosed instructions. Save these instructions for future reference.

- Do not expose to water, moisture, humid and damp environments or extreme temperatures.
- Persons (including children) with reduced physical, sensory or mental capabilities, or lack of experience and knowledge should not be allowed to use this product.
- Use or modification outside the scope of this instruction manual will void warranty.
- Installation and programming to be performed by a suitably qualified installer.
- Follow installation instructions.
- For use with motorized shading devices.
- Keep away from children.
- Frequently inspect for improper operation. Do not use if repair or adjustment is necessary.
- Keep clear when in operation.
- Replace battery with correctly specified type.

Texton declares this equipment is in compliance with the essential requirements and other relevant provisions of R&TT EC Directive 1999/5/EC

Statement Regarding FCC Compliance

This device complies with Part 15 of the FCC Rules. Operation is subject to the following two conditions:

- (1) This device may not cause harmful interference, and
- (2) This device must accept any interference received, including interference that may cause undesired operation.

Note:

This equipment has been tested and found to comply with the limits for a Class B digital device, pursuant to Part 15 of the FCC Rules. These limits are designed to provide reasonable protection against harmful interference in a residential installation. This equipment generates, uses and can radiate radio frequency energy and, if not installed and used in accordance with the instructions, may cause harmful interference to radio communications.

However, there is no guarantee that interference will not occur in a particular installation. If this equipment does cause harmful interference to radio or television reception, which Can be determined by turning the equipment off and on, the user is encouraged to try to correct the interference by one or more of the following measures:

- Reorient or relocate the receiving antenna.
- Increase the separation between the equipment and receiver.
- Connect the equipment into an outlet on a circuit different from that to which the receiver is connected.
- Consult the dealer or an experienced radio/TV technician for help.

Any changes or modifications not expressly approved by the party responsible for compliance could void the user's authority to operate the equipment.



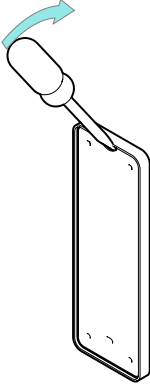
Do not dispose of in general waste.
Please recycle batteries and damaged electrical products appropriately.



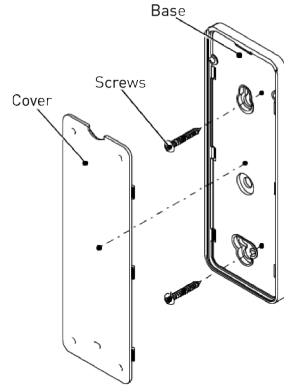
3 INSTALLATION

3.1 Wall mount holder

Remove cover from base by prying with flat head screwdriver.



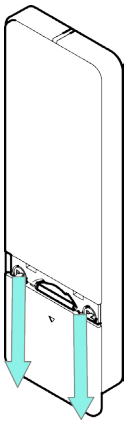
Use supplied fasteners and anchors to attach the base to wall.



Replace cover by pressing snap latches into place.

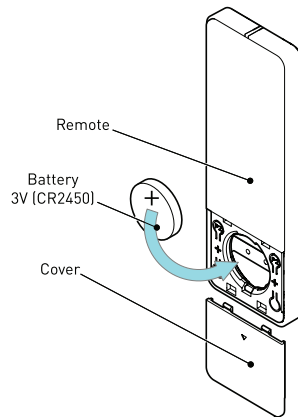
3.2 Remote battery

Remove cover from remote press gently in and down to disengage cover.



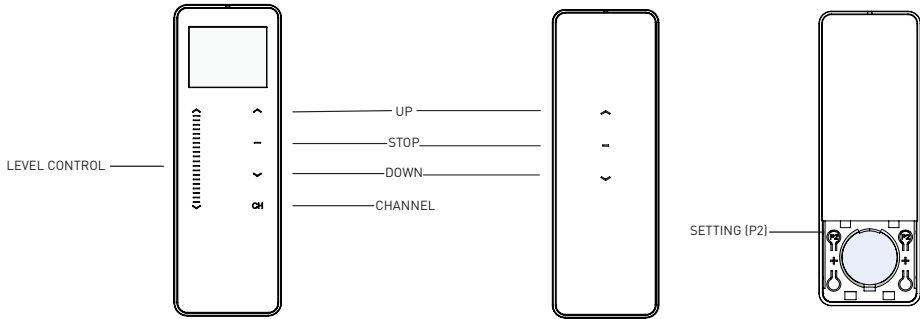
Slide to remove.

Install battery with positive (+) side facing up.



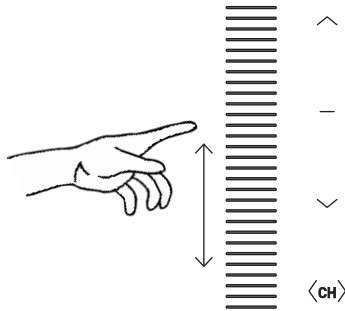
4 FUNCTIONAL OVERVIEW

4.1 Buttons



4.2 Levelling control

The levelling control bar can be used to visualize and accurately set your preferred shade position. When used to control a group of shades, they will all perfectly align to the same position.

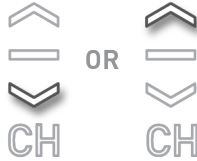


4.3 Selecting a channel - (multi channel remote)

Hold **CH** button.



Within 4 seconds press **UP** or **DOWN** to select desired channel .



Press **CH** or **STOP** to confirm



Response

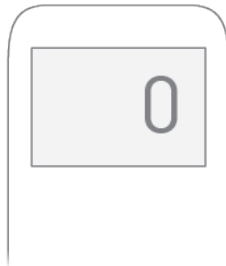
LCD screen will begin to flash



If no button is pressed within 4 seconds, the channel selection will automatically be confirmed

4.4 Group control using CH "0"

Channel "0" is pre-set to controll **ALL** shades paired within your multi-channel remote. To create a customized group channel ref to section 6



5 PROGRAMMING



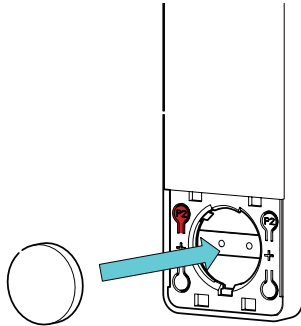
IMPORTANT

Please refer to the the relevant documentation of your motor model for instructions on adjusting motor settings.

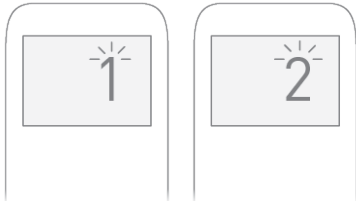
5.1 Protocol selection

This device can be configured to operate Acmeda line “EL” motors. (The default mode is ARC protocol). To toggle between ARC & EL modes follow the following steps.

HOLD P2 whilst inserting battery



For 15 CH



Screen flashes X 5

Screen flashes “1” = ARC Mode

Screen flashes “2” = EL Mode

For 1 CH



1 Flash = ARC Mode 2

Flashes = EL Mode

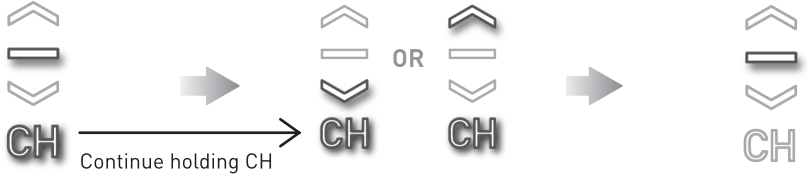
5.2 Hide unused channels

Your multi channel remote can be configured to have anywhere between 1 or 15 visible channels. Inactive channels will not be visible when scrolling through the CH selection.

Hold **STOP**
and **CH**

Continue holding **CH** and
select required channel qty by
pressing **UP** or **DOWN**

Press **STOP** to confirm



Response

Channel 15 flashes

Response

Flashing stops

5.3 Disable limit setting function of remote



IMPORTANT

This mode is intended to be used after all shade programming is completed.

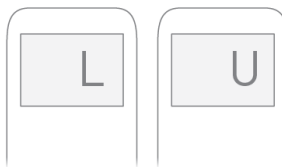
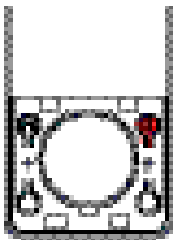
User Mode will prevent accidental or unintended changing of limits.

To switch modes hold
right  button for 5
Seconds

15 CH

Pressing the right  button for 1 second or less will display the current mode

1 CH



Response

LCD displays "L" when locked LCD
displays "U" when unlocked



Response

LED solid on when locked LED
blinking when unlocked

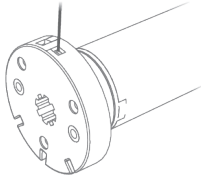


It is still possible to add or delete channels and perform P2 functions, while the lock function is enabled.

6 ADDING OR REMOVING CONTROLLERS & CREATING GROUP CHANNELS

6.1 Using Motor P1 Button

Hold **P1** button on motor head.



Hold **STOP** on controller to add or remove.



Motor Response



Motor Response



6.2 Using a pre-existing Controller

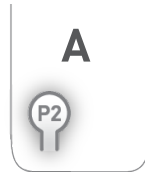
A= Existing controller or channel (to keep)

B= Controller or channel to add or remove

Press **P2** on existing controller.



Press **P2** on existing controller.



Press **P2** on new controller.



Motor Response



Motor Response



Motor Response



IMPORTANT

Consult user manual for your controller or sensor.

7 TROUBLESHOOTING

Problem	Cause	Remedy
Motor is not responding	Remote battery is discharged	Replace battery
	Battery is inserted incorrectly	Check battery polarity
	Radio interference / Shielding	Ensure remote is positioned away from metal objects and that aerial on motor or receiver is kept straight and away from metal.
	Receiver distance is too far from remote	Move remote to a closer position
	Power failure	Check power supply to motor is connected and active
	Incorrect wiring	Check wiring is connected correctly (refer to motor installation instructions)
Cannot set limits on a single motor (multiple motors respond)	Using "Group" channels to adjust motor limits	Always reserve an individual channel for programming functions.
		SYSTEM BEST PRACTICE - Provide an extra 15 channel remote in your multi motor projects, that provides individual control for each motor for programming purposes.

