




*LET'S GET  
POWERED UP!*

For Somfy Motors

Your guide to shade motorization, by **TEXTON**

A bright, airy room with a large window on the left. To the right of the window is a white bookshelf filled with books. Below the bookshelf is a white desk with drawers. A wooden table is in the foreground on the right, and a colorful rug is partially visible. A semi-transparent white box with a red border contains text in the center of the image.

Review this quick reference guide for an overview of some important features with your Somfy Motorized Shade, from TEXTON. Some equipment described in this guide may not be included with your shade. This guide is designed to help with common questions and troubleshooting. For advanced support, including re-programming a motor or similar, please contact the dealer your purchased your shade from, or TEXTON directly.

# TABLE OF CONTENTS

About your Remote ..... 4

Setting Favorites and Limits..... 6

FAQ's ..... 8

App & Hub Quick Links..... 9

Troubleshooting..... 10

Channel Listing ..... 11

Installer Notes ..... 11

## REMOTE CONTROL

### Telis RTS Hand-Held Remote

UP Button

The "my" button acts as a stop button when the window covering is in motion. When the window covering is stationary, the "my" button brings it to the programmed favorite position.

DOWN Button

Channel LED - All 4 lights will illuminate when fifth channel is activated.

Channel Selection Button

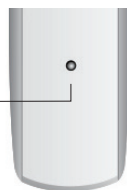


Telis 4 RTS Pure  
Hand-Held Remote  
1810633  
*Telis 1 RTS also available*

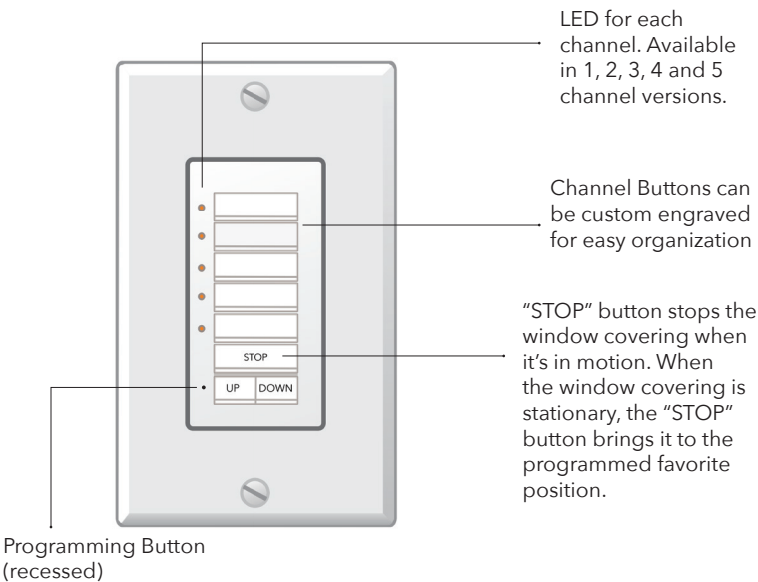


- |   |   |   |   |           |
|---|---|---|---|-----------|
| ● | ● | ● | ● | Channel 1 |
| ● | ● | ● | ● | Channel 2 |
| ● | ● | ● | ● | Channel 3 |
| ● | ● | ● | ● | Channel 4 |
| ● | ● | ● | ● | Channel 5 |

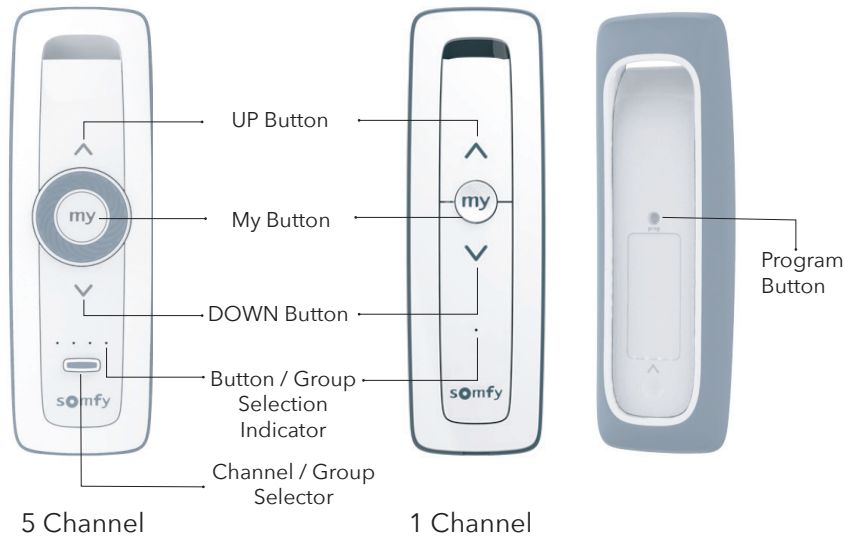
Programming Button  
(recessed)



# DecoFlex WireFree RTS Wall Switch



# Situo RTS Remote



## FAVORITES & LIMITS

Your TEXTON shade allows you to have favorite positions, based on user preference. Below are the steps to configure and activate your favorite position.

### Setting a Favorite Position

Move shade to the desired position by pressing the **UP** or **DOWN** button on the controller.

At the desired position, Press **MY** on Controller to stop the window covering

Once the desired "my" position is reached, press and hold **MY** until the window covering jogs. The "my" position is now added to memory.



### Send Shade to Favorite Position

Send the window covering to the "my" position by pressing the **MY** button from any window covering position.



### Deleting "MY" Position

Press **MY** button to send to favorite position. Once in favorite position, press and hold **MY** button for 5 seconds. The shade will jog to confirm deletion of "my" position.



## Adjusting Lower Limit

Press **DOWN** to send the shade to its current lower limit.

Press **UP & DOWN** simultaneously until the window covering jogs. Adjust to a new LOWER limit.

To save lower limit, hold **MY** button until the shade jogs to confirm the new limit.



## Adjusting Upper Limit

Press **UP** to send the shade to its current upper limit.

Press **UP & DOWN** simultaneously until the window covering jogs. Adjust to a new UPPER limit.

To save lower limit, hold **MY** button until the shade jogs to confirm the new limit.



The **STOP** button on the DecoFlex Wall Switch button performs the same function as the **MY** button on the Telis remote.

## WHAT YOU NEED TO KNOW

### **What is the range of my remote control or wall switch?**

RTS is a radio technology that can communicate with motorized products reliably up to 20 feet and from up to 65 feet in optimal conditions. There is no need to point or aim the remote or control device at the window covering because RTS is omni-directional. And Just like a garage door opener, the radio waves travel through walls.

### **Will my Somfy remotes interfere with other radio controlled products in my or my neighbor's home?**

Since RTS is radio-based technology, you might wonder if your remotes or controls will interfere with other radio controlled products in your building or neighborhood. But there's nothing to worry about. Somfy RTS technology utilizes a rolling code with 16 million combinations to ensure the RTS communication is both safe and secure.

### **How do I replace the batteries in my battery wand and how many batteries do I need?**

Each battery wand requires 8 AA lithium batteries. To install the batteries, unscrew to cap and install the batteries as shown on the outside of the battery wand. Be sure you only use AA lithium batteries and do not combine old batteries with new.

### **How long do I need to charge my Li-ion motors?**

6 hours

### **How long will my Li-ion motors last before I need to recharge them?**

Typically, Li-ion motors will last a year before needing a recharge. However, factors such as shade size, shade weight and usage all play a part in how long the motor will last before needing to be recharged.

For more FAQs, please visit [texton.com/knowledgebase](https://texton.com/knowledgebase)



## For Apple Devices

Somfy MyLink



## For Android Devices

Somfy MyLink



## Smart Speakers & Other Hubs

Alexa



Alexa Routines



IFTT



Problem	Cause	Remedy
Motor is not responding	Battery Dead	Connect charge cable to battery and let charge for 6 hours.
	Power supply not plugged in	Check motor to power cable connection and power plug
	Battery is inserted incorrectly to transmitter (remote)	Ensure battery is correctly placed in the remote. (ie. Positive to positive, negative to negative)
	Radio interference / Shielding	Ensure transmitter is position away from metal objects and the aerial on motor or receiver is kept straight and away from metal.
Motor beeps 10 times when in use	Battery voltage is low	Replace batteries in battery wand, OR recharge battery

## MOTOR WARRANTY

Somfy offers end product suppliers a 5-year warranty on all motors and controls. Specifically, Somfy warrants its motors and controls to be free from defects in material and workmanship under normal and proper use for a period of 5 years commencing with the date stamped on each product. If the Somfy product fails within this 5 year period, we will repair or replace it free of charge through your end product supplier.

INSTALLER NOTES

Channel	Location
1	
2	
3	
4	
5	
6	
7	
8	
9	
10	
11	
12	
13	
14	
15	

**TEXTON**  
[WWW.TEXTON.COM](http://WWW.TEXTON.COM)